

Date: April 10, 2020

NEWSLETTER Q1-20

Friends of the Beter Malawi Foundation,

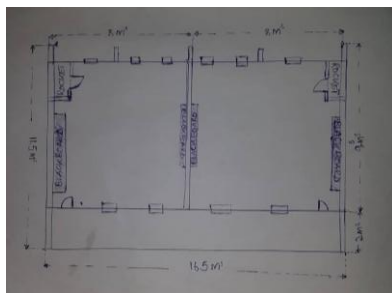
While we are currently keeping quiet due to the corona virus, we ourselves are still healthy. After contacting our local contact person Lewis, we know that in 'our' Mawa no one is yet bothered by Corona. However, 9 Corona infections have been confirmed in Malawi when this newsletter was sent, and 1 person died from it. In Malawi, the government has also taken measures as we know them here; washing hands regularly, schools closed, no meetings with more than 100 people at the same time, but also 40% fewer passengers in local transport. We hold our heart for the developments regarding Corona in Africa.

In this newsletter we look back at the events of the first quarter of 2020.

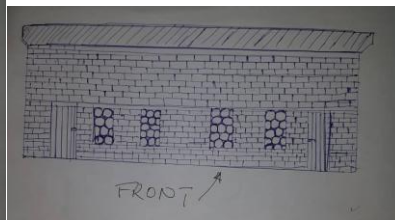
Classrooms Namajoka Primary School

Preparations are now being made for the construction of 2 new classrooms, but now at Namajoka Primary School. They have sufficient knowledge of the LFP method of agriculture and have done their best to show us. What you may have noticed is that this is the 3rd primary school where we are going to build classrooms. In this way we try to spread the chance of education during the rainy season in Zomba.

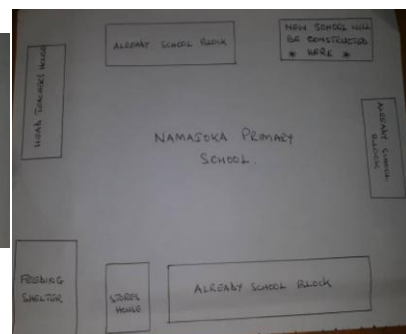
The budget for these rooms is 9,535,200 Malawian Kwacha (€ 11,919). of which the community contributes Kwacha 2,788,000 and asked us to sponsor 6,747,200. We have asked the Wilde Ganzen Foundation if they want to financially support this project. We are also still looking for sponsors who want to contribute to this project. Below some drawings of the design of the new classrooms.



A nice drawing of the layout.



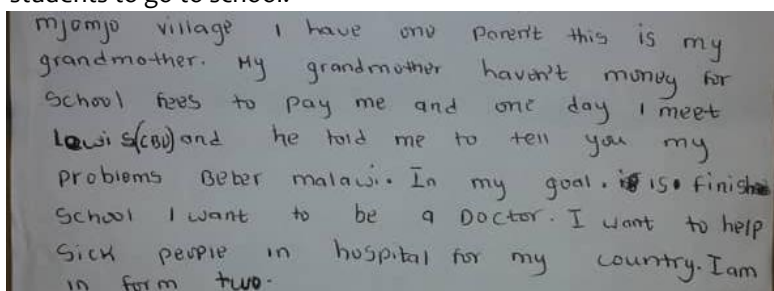
A drawing of the front view of the building.



An overview of the current buildings and the new.

Schoolfees

An update from the School Fee project that our Marleen is working on. In this project we link sponsors to students in Mawa ('our' area in Malawi) to pay their school fees. Usually these are children who have just started in form 1 (first class of secondary school) but who have difficulty paying the school fees and therefore sometimes have to drop out of school. The age of the students varies. Some students are 13/14 years old and have therefore not previously been enrolled in the Primary school (primary school), but there are also students who are already 17 and who are now only in the first grade of secondary school. In the meantime, quite a few students have been added recently. We are currently sponsoring 23 students and there are already several students who have graduated. This is very good news. Our contact person in Malawi and the students are very grateful for this. For them it is the opportunity to get a high school diploma. We remain committed to getting more and more students to go to school.



Here an example of a letter in which a student registers with us, looking for a sponsor for the school fees.

Date: April 10, 2020

NEWSLETTER Q1-20

Unfortunately, such a situation is more common in Malawi.

Last January we received the reports from the students and shared them with the sponsors. Most had nice reports, although that sometimes seems different. The numerical method is slightly different there than here in the Netherlands. A '1' is very good and a '9' is not so good. We hope that students who have scored a little less (higher grades) can improve this in the last semester.

Thank you to everyone who is a sponsor on behalf of the foundation and the students! If you would like to become a sponsor, please send an email to marleen@betermalawi.nl

Leading Farmer Project (LFP)

This season, 35 farmers are participating in LFP's agricultural methodology. They receive expert guidance from our project leader and the Expert Team. There has been more rain than expected for the time being, so hopefully this will result in a larger harvest than in previous years.

4 primary schools (Namadidi, Namilongo, Namajoka and Nkanda) are also participating in the agricultural program. In this way we hope to teach the new method from an early age.

In the background we are secretly trying to find someone in the Netherlands willing to travel with us to Zomba in Malawi. And this time an agricultural expert. We have the idea that there is much more to get out of the ground than that we can currently do with the LFP method. We have already thrown out some lines, but if you as a reader have any suggestions, they are always welcome!

Project 'Books'



In our previous newsletter, we indicated that 325 books were sent by post. These books are now fully enjoyed at Mkanda Primary School.

In the first quarter we were able to send 80 (!) Boxes with a total of 6200 (!) Books by ship. We received the books from Read to Grow and International School Eindhoven (ISE) sponsored the shipping costs. We are very happy with that, thanks!

It will take a while (the trip will take 3 months) before the books will arrive in Malawi, but that shouldn't spoil the fun.

The Better Malawi Team
Erik, Dick, Marleen and Manon